

Safeguarding Adults Policy

Park Community School

Adopted by Park Community Ventures (Charity No. 1134562) and Park Community Enterprises Limited (Registered No. 8519328)

Contents

Section 1: Safeguarding Adults Policy	3
Introduction.....	3
Policy Statement.....	3
Principles and Values	3
Aims	3
Park Community School is committed to Safeguarding Adults in line with national legislation and relevant national and local guidelines.	3
Purpose.....	4
Scope	4
Commitments	4
Implementation	5
Section 2- Supporting Information.....	7
Key Points	7
Safeguarding Adults Legislation	7
Definition of an Adult at Risk.....	8
Abuse and Neglect.....	8
Signs and Indicators of Abuse and Neglect.....	9
Wellbeing Principle	9
Person Centred Safeguarding/ Making Safeguarding Personal	10
The Principles of Adult Safeguarding in England	10
Mental Capacity and Decision Making	11
Recording and Information Sharing.....	12
Multi-Agency Working.....	13
Section 3: Appendices	15
Appendix 1 - Role of the Designated Safeguarding Lead and Key Personnel.....	15
Appendix 2 - Case Management	16
Appendix 3 – Sources of Information and Support	17

Section 1: Safeguarding Adults Policy

Introduction

This policy should be read in conjunction with Park Community School's Student Safeguarding Policy and Staff 'Dignity at Work' Code of Conduct.

Policy Statement

Safeguarding determines the actions that we take to keep children and adults safe and protect them from harm in all aspects when visiting the school site. As an establishment we are committed to safeguarding and promoting the welfare of children and adults.

The actions that we take to prevent harm; to promote wellbeing; to create safe environments; to educate on rights, respect and responsibilities; to respond to specific issues and vulnerabilities all form part of the safeguarding responsibilities of the school. As such, this overarching policy will link to other policies which will provide more information and greater detail.

Principles and Values

Aims

- To provide staff with the framework to promote and safeguard the wellbeing of adults and children and in so doing ensure they meet their statutory responsibilities.
- To ensure consistent good practice across the school.
- To demonstrate our commitment to protecting adults and children.

Park Community School is committed to Safeguarding Adults in line with national legislation and relevant national and local guidelines.

Park Community School believes everyone has the right to live free from abuse, exploitation or neglect regardless of age, ability or disability, sex, race, religion, ethnic origin, sexual orientation, marital or gender status.

Park Community School is committed to creating and maintaining a safe and positive environment and a culture of zero-tolerance of harm to adults which necessitates:

- the recognition of adults who may be at risk and the circumstances which may increase risk;
- knowing how adult abuse, exploitation or neglect manifests itself;
- being willing to report safeguarding concerns;
- having a listening culture where people feel able to share concerns without retribution.

This extends to recognising and reporting harm experienced anywhere, including within our activities, within other organised community or voluntary activities, in the community, in the person's own home and in any care setting.

Park Community School acknowledges that safeguarding is everybody's

responsibility and is committed to prevent abuse and neglect through safeguarding the welfare of all adults involved.

We will safeguard adults by ensuring that our activities are delivered in a way which keeps all adults safe.

Park Community School recognises that health, well-being, ability, disability and need for care and support can affect a person's resilience. We recognise that some people experience barriers, for example, to communication in raising concerns or seeking help. We recognise that these factors can vary at different points in people's lives.

Park Community School recognises that there is a legal framework within which sports and community activities need to work to safeguard adults who have needs for care and support and for protecting those who are unable to take action to protect themselves and will act in accordance with the relevant safeguarding adult legislation and with local statutory safeguarding procedures.

Actions taken by Park Community School will be consistent with the principles of adult safeguarding ensuring that any action taken is prompt, proportionate and that it includes and respects the voice of the adult concerned.

As a school we will review this policy at least annually in line with DfE, HSCP, HCC and any other relevant guidance.

Purpose

The purpose of this policy is to demonstrate the commitment of Park Community School to safeguarding adults and to ensure that everyone involved in the organisation is aware of:

- The legislation, policy and procedures for safeguarding adults.
- Their role and responsibility for safeguarding adults.
- What to do or who to speak to if they have a concern relating to the welfare or wellbeing of an adult within the organisation.

Scope

This safeguarding adult policy and associated procedures applies to all individuals involved in Park Community School including Governing Body members, staff, coaches, volunteers, sports clubs, organisations and community users and to all concerns about the safety of adults whilst taking part in our organisation, its activities and in the wider community.

We expect our partner organisations, including for example, affiliated clubs, suppliers and sponsors to adopt and demonstrate their commitment to the principles and practice as set out in this Safeguarding Adults Policy and associated procedures.

Commitments

In order to implement this policy Park Community School will ensure that:

- Everyone involved with Park Community School is aware of the safeguarding adult procedures and knows what to do and who to contact if they have a concern relating to the welfare or wellbeing of an adult.
- Any concern that an adult is not safe is taken seriously, responded to promptly, and followed up in line with Park Community School Safeguarding Adults Policy and Procedures.

- The well-being of those at risk of harm will be put first and the adult actively supported to communicate their views and the outcomes they want to achieve. Those views and wishes will be respected and supported unless there are overriding reasons not to (see the Safeguarding Adults Procedures).
- Any actions taken will respect the rights and dignity of all those involved and be proportionate to the risk of harm.
- Confidential, detailed and accurate records of all safeguarding concerns are maintained and securely stored in line with our Data Protection Policy and Procedures
- Park Community School acts in accordance with best practice advice, for from a variety of sources, Sport England, Energise Me, National Governing Bodies, NSPCC, Department for Education and Hampshire County Council.
- Park Community School will cooperate with the Police and the relevant Local Authorities in taking action to safeguard an adult.
- All Governors, staff, officials and volunteers understand their role and responsibility for safeguarding adults and have completed and are up to date with safeguarding adult training and learning opportunities appropriate for their role.
- Park Community School uses safe recruitment practices and continually assesses the suitability of volunteers and staff to prevent the employment/deployment of unsuitable individuals in this organisation and within the sporting community.
- Park Community School shares information about anyone found to be a risk to adults with the appropriate bodies. For example: Disclosure and Barring Service, Services, Police, Local Authority/Social Services.
- When planning activities and events Park Community School includes an assessment of, and risk to, the safety of all adults from abuse and neglect and designates a person who will be in attendance as a safeguarding lead for that event.
- Actions taken under this policy are reviewed by the Governing Body and senior management team on an annual basis.
- This policy, related policies (see below) and the Safeguarding Adults Procedures are reviewed no less than on a yearly basis and whenever there are changes in relevant legislation and/or government guidance as required by the Local Safeguarding Board, Sport England, Energise Me, National Governing Bodies, NSPCC, Department for Education and Hampshire County Council or as a result of any other significant change or event.

Implementation

Park Community School is committed to developing and maintaining its capability to implement this policy and procedures.

In order to do so the following will be in place:

- A clear line of accountability within the organisation for the safety and welfare of all adults.
- Access to relevant legal and professional advice.
- Regular management reports to the Governing Body detailing how risks to adult safeguarding are being addressed and how any reports have been addressed.
- Safeguarding adult procedures that deal effectively with any concerns of abuse or neglect, including those caused through poor practice.
- A Safeguarding Lead/ Welfare Officer (see Appendix 1).
- A delegated Safeguarding Lead/Welfare Officer for events/trips/camps/ competitions.
- Arrangements to work effectively with other relevant organisations to safeguard and promote the welfare of adults, including arrangements for sharing information.
- Risk assessments that specifically include safeguarding of adults.
- Policies and procedures that address the following areas and which are consistent with this Safeguarding Adults policy.
 - Safeguarding Children

- Bullying and harassment
- Social Media
- Equality, diversity and inclusion
- Safe activities risk assessments
- Code of Conducts and a process for breach of these - Staff, Coaches, Officials, Volunteers, Participants/Members, Carers/Personal Assistants,
- Discipline and grievance
- Concerns, Complaints and Compliments
- Whistleblowing
- Safe recruitment and selection (staff and volunteers)
- Contract compliance
- Information policy, data protection and information sharing

Section 2- Supporting Information

Key Points

- There is a **legal duty on Local Authorities** to provide support to 'adults at risk'. **Adults at risk** are defined in legislation and the criteria applied shown on page 12).
- The safeguarding legislation applies **to all forms of abuse** that harm a person's well-being.
- The law provides a framework for good practice in safeguarding that makes the overall **well-being** of the adult at risk a priority of any intervention.
- The law emphasises the importance of **person-centred safeguarding**, (referred to as '**Making Safeguarding Personal**' in England).
- The law provides a framework for making decisions on behalf of adults who can't make decisions for themselves (**Mental Capacity**).
- The law provides a framework for sports organisations to **share concerns** they have about adults at risk with the local authority.
- The law provides a framework for all organisations to **share information and cooperate** to protect adults at risk.

Safeguarding Adults Legislation

Safeguarding Adults in all home nations is compliant with United Nations directives on the rights of disabled people and commitments to the rights of older people. It is covered by:

- The Human Rights Act 1998
- The Data Protection Act 2018
- General Data Protection Regulations 2018

The practices and procedures within this policy are based on the relevant legislation and government guidance:

- England - The Care Act 2014
Care and Support Statutory Guidance (especially chapter 14) 2014

Many other pieces of UK legislation also affect adult safeguarding.

These include legislation about different forms of abuse and those that govern information sharing. For example, legislation dealing with:

- Murder/attempted murder
- Physical Assault
- Sexual Offences
- Domestic Abuse/Coercive control
- Forced Marriage
- Female Genital Mutilation
- Theft and Fraud
- Modern slavery and human exploitation
- Hate crime
- Harassment
- Listing and Barring of those unsuitable to work with adults with care and support needs

Each home nation also has legislation about the circumstances in which decisions can be made on behalf of an adult who is unable to make decisions for themselves:

- England and Wales - Mental Capacity Act 2005
- There are specific offences applying to the mistreatment of and sexual offences against adults who do not have Mental Capacity and specific offences where mistreatment is carried out by a person who is employed as a carer, e.g. wilful neglect and wilful mistreatment.

Definition of an Adult at Risk

The Safeguarding Adults legislation creates specific responsibilities on Local Authorities, Health, and the Police to provide additional protection from abuse and neglect to Adults at Risk.

When a Local Authority has reason to believe there is an adult at risk, they have a responsibility to find out more about the situation and decide what actions need to be taken to support the adult.

The actions that need to be taken might be by the Local Authority (usually social services) and/or by other agencies, for example the Police and Health. A sporting organisation may need to take action as part of safeguarding an adult, for example, to use the disciplinary procedures in relation to a member of staff or member who has been reported to be harming a participant. The Local Authority role includes having multi-agency procedures which coordinate the actions taken by different organisations.

An Adult at Risk in England is defined below:

England (Care Act 2014): An **adult at risk** is an individual aged 18 years and over who:

- (a) has needs for care and support (whether or not the local authority is meeting any of those needs) AND;
- (b) is experiencing, or at risk of, abuse or neglect, AND;
- (c) as a result of those care and support needs is unable to protect themselves from either the risk of, or the experience of abuse or neglect.

Abuse and Neglect

Abuse is a violation of an individual's human and civil rights by another person or persons. It can occur in any relationship and may result in significant harm to, or exploitation of, the person subjected to it. Any or all of the following types of abuse may be perpetrated as the result of deliberate intent, negligence, omission or ignorance.

There are different types and patterns of abuse and neglect and different circumstances in which they may take place.

Safeguarding legislation lists the following types of abuse:

- Physical
- Sexual
- Psychological
- Neglect
- Financial

Abuse can take place in any relationship and there are many contexts in which abuse might take place; e.g. Institutional abuse, Domestic Abuse, Forced Marriage, Human Trafficking, Modern Slavery, Sexual Exploitation, County Lines, Radicalisation, Hate Crime, Mate Crime, Cyber bullying, Scams.

Abuse can take place within a community or sporting context and the person causing harm might be any other person. For example: a member of staff, a coach, a volunteer, a participant or a fan.

Some examples of abuse within sport and community activities include:

- Harassment of a participant because of their (perceived) disability or other protected characteristics.
- Not meeting the needs of the participant e.g. training without a necessary break.
- A coach intentionally striking a participant
- One elite participant controlling another athlete with threats of withdrawal from their partnership
- An member of staff or volunteer who sends unwanted sexually explicit text messages to a participant with learning disabilities.
- A participant threatens another participant with physical harm and persistently blames them for lack of effort.

Abuse or neglect outside sport and community activities could be carried out by:

- A spouse, partner or family member
- Neighbours or residents
- Friends, acquaintances or strangers
- People who deliberately exploit adults they perceive as vulnerable
- Paid staff, professionals or volunteers providing care and support

Often the perpetrator is known to the adult and may be in a position of trust and/or power.

The Safeguarding Adults Legislation in England defines categories of adult abuse and harm as follows:

England (Care Act 2014)

- Physical
- Sexual
- Emotional/Psychological/Mental
- Neglect and acts of Omission
- Financial or material abuse
- Discriminatory
- Organisational / Institutional
- Self-neglect
- Domestic Abuse (including coercive control)
- Modern slavery

Signs and Indicators of Abuse and Neglect

An adult may confide to a member of staff, coach, volunteer or another participant that they are experiencing abuse inside or outside of the organisation's setting. Similarly, others may suspect that this is the case.

There are many signs and indicators that may suggest someone is being abused or neglected. There may be other explanations, but they should not be ignored. The signs and symptoms include but are not limited to:

Wellbeing Principle

'The success of sport, in terms of helping people achieve their potential, making the most of existing talent, and attracting new people to sport relies on putting people – their safety, wellbeing and welfare – at the centre of what sport does.'

Duty of Care in Sport Independent Report to Government Baroness Tanni Grey-Thompson DBE, DL.

The concept of 'well-being' is threaded throughout UK legislation and is part of the Law about how health and social care is provided. Our well-being includes our mental and

physical health, our relationships, our connection with our communities and our contribution to society.

Being able to live free from abuse and neglect is a key element of well-being.

The legislation recognises that statutory agencies have sometimes acted disproportionately in the past. For example, removing an adult at risk from their own home when there were other ways of preventing harm. In the words of Justice Mumby *'What good is it making someone safe when we merely make them miserable?'* What Price Dignity? (2010)

For that reason any actions taken to safeguard an adult must take their whole well-being into account and be proportionate to the risk of harm.

Person Centred Safeguarding/ Making Safeguarding Personal

The legislation also recognises that adults make choices that may mean that one part of our well-being suffers at the expense of another – for example we move away from friends and family to take a better job. Similarly, adults can choose to risk their personal safety; for example, to provide care to a partner with dementia who becomes abusive when they are disorientated and anxious.

None of us can make these choices for another adult. If we are supporting someone to make choices about their own safety we need to understand 'What matters' to them and what outcomes they want to achieve from any actions agencies take to help them to protect themselves.

The concept of 'Person Centred Safeguarding'/'Making Safeguarding Personal' means engaging the person in a conversation about how best to respond to their situation in a way that enhances their involvement, choice and control, as well as improving their quality of life, well-being and safety. Organisations work to support adults to achieve the outcomes they want for themselves. The adult's views, wishes, feelings and beliefs must be taken into account when decisions are made about how to support them to be safe. There may be many different ways to prevent further harm. Working with the person will mean that actions taken help them to find the solution that is right for them. Treating people with respect, enhancing their dignity and supporting their ability to make decisions also helps promote people's sense of self-worth and supports recovery from abuse.

If someone has difficulty making their views and wishes known, then they can be supported or represented by an advocate. This might be a safe family member or friend of their choice or a professional advocate (usually from a third sector organisation).

The Principles of Adult Safeguarding in England

England (Care Act 2014) - the Act's principles are:

- **Empowerment** - People being supported and encouraged to make their own decisions and informed consent.
- **Prevention** – It is better to take action before harm occurs.
- **Proportionality** – The least intrusive response appropriate to the risk presented.
- **Protection** – Support and representation for those in greatest need.
- **Partnership** – Local solutions through services working with their communities. Communities have a part to play in preventing, detecting and reporting neglect and abuse

- **Accountability** – Accountability and transparency in delivering safeguarding.

Mental Capacity and Decision Making

We make many decisions every day, often without realising. UK Law assumes that all people over the age of 16 have the ability to make their own decisions, unless it has been proved that they can't. It also gives us the right to make any decision that we need to make and gives us the right to make our own decisions even if others consider them to be unwise.

We make so many decisions that it is easy to take this ability for granted. The Law says that to make a decision we need to:

- Understand information
- Remember it for long enough
- Think about the information
- Communicate our decision

A person's ability to do this may be affected by things such as learning disability, dementia, mental health needs, acquired brain injury and physical ill health.

Most adults have the ability to make their own decisions given the right support however, some adults with care and support needs have the experience of other people making decisions about them and for them.

Some people can only make simple decisions like which colour T-shirt to wear or can only make decisions if a lot of time is spent supporting them to understand the options. If someone has a disability that means they need support to understand or make a decision this must be provided. A small number of people cannot make any decisions. Being unable to make a decision is called "lacking mental capacity".

Mental capacity refers to the ability to make a decision at the time that decision is needed. A person's mental capacity can change. If it is safe/possible to wait until they are able to be involved in decision making or to make the decision themselves.

For example:

- A person with epilepsy may not be able to make a decision following a seizure.
- Someone who is anxious may not be able to make a decision at that point.
- A person may not be able to respond as quickly if they have just taken some medication that causes fatigue.

Mental Capacity is important for safeguarding for several reasons.

Not being allowed to make decisions one is capable of making is abuse. For example, a disabled adult may want to take part in an activity but their parent who is their carer won't allow them to and will not provide the support they would need. Conversely the adult may not seem to be benefiting from an activity other people are insisting they do.

Another situation is where an adult is being abused and they are scared of the consequences of going against the views of the person abusing them. It is recognised in the law as coercion and a person can be seen not to have mental capacity because they cannot make 'free and informed decisions'.

Mental Capacity must also be considered when we believe abuse or neglect might be taking place. It is important to make sure an 'adult at risk' has choices in the actions

taken to safeguard them, including whether or not they want other people informed about what has happened, however, in some situations the adult may not have the mental capacity to understand the choice or to tell you their views.

England has legislation that describes when and how we can make decisions for people who are unable to make decisions for themselves. The principles are:

- We can only make decisions for other people if they cannot do that for themselves at the time the decision is needed.
- If the decision can wait, wait – e.g. to get help to help the person make their decision or until they can make it themselves.
- If we have to make a decision for someone else then we must make the decision in their best interests (for their benefit) and take into account what we know about their preferences and wishes.
- If the action we are taking to keep people safe will restrict them then we must think of the way to do that which restricts to their freedom and rights as little as possible.

Many potential difficulties with making decisions can be overcome with preparation. A person needing support to help them make decisions whilst taking part in a community or sports organisation will ordinarily be accompanied by someone e.g. a family member or formal carer whose role includes supporting them to make decisions.

It is good practice to get as much information about the person as possible. Some people with care and support needs will have a 'One page profile' or a 'This is me' document that describes important things about them. Some of those things will be about how to support the person, their routines, food and drink choices etc. but will also include things they like and don't like doing. It's also important to have an agreement with the person who has enrolled the adult in the sports activity about how different types of decisions will be made on a day to day basis.

If a person who has a lot of difficulty making their own decisions is thought to be being abused or neglected you will need to refer the situation to the Local Authority, and this should result in health or social care professionals making an assessment of mental capacity and/or getting the person the support they need to make decisions.

There may be times when an organisation needs to make decisions on behalf of an individual in an emergency. Decisions taken in order to safeguard an adult who cannot make the decision for themselves could include:

- Sharing information about safeguarding concerns with people that can help protect them.
- Stopping them being in contact with the person causing harm.

Recording and Information Sharing

All organisations must comply with the Data Protection Act (DPA) and the General Data Protection Regulations (GDPR).

Information about concerns of abuse includes personal data. It is therefore important to be clear as to the grounds for processing and sharing information about concerns of abuse.

Processing information includes record keeping. Records relating to safeguarding concerns must be accurate and relevant. They must be stored confidentially with access only to those with a need to know.

Sharing information, with the right people, is central to good practice in safeguarding

adults. However, information sharing must only ever be with those with a 'need to know'. This does **NOT** automatically include the person's spouse, partner, adult, child, unpaid or paid carer. Information should only be shared with family and friends and/or carers with the consent of the adult or if the adult does not have capacity to make that decision and family/ friends/ carers need to know in order to help keep the person safe.

The purpose of Data Protection legislation is not to prevent information sharing but to ensure personal information is only shared appropriately. Data protection legislation allows information sharing within an organisation. For example:

- Anyone who has a concern about harm can make a report to an appropriate person within the same organisation
- Case management meetings can take place to agree to co-ordinate actions by the organisation

There are also many situations in which it is perfectly legal to share information about adult safeguarding concerns outside the organisation. Importantly personal information can be shared with the consent of the adult concerned. However, the adult may not always want information to be shared. This may be because they fear repercussions from the person causing harm or are scared that they will lose control of their situation to statutory bodies or because they feel stupid or embarrassed. Their wishes should be respected unless there are over-riding reasons for sharing information.

The circumstances when we need to share information without the adult's consent include those where:

- it is not safe to contact the adult to gain their consent – i.e. it might put them or the person making contact at further risk.
- you believe they or someone else is at risk, including children.
- you believe the adult is being coerced or is under duress.
- it is necessary to contact the police to prevent a crime, or to report that a serious crime has been committed.
- the adult does not have mental capacity to consent to information being shared about them.
- the person causing harm has care and support needs.
- the concerns are about an adult at risk living in Wales or Northern Ireland (where there is a duty to report to the Local Authority).

When information is shared without the consent of the adult this must be explained to them, when it is safe to do so, and any further actions should still fully include them.

If you are in doubt as to whether to share information seek advice e.g. seek legal advice and/or contact the Local Authority and explain the situation without giving personal details about the person at risk or the person causing harm.

Any decision to share or not to share information with an external person or organisation must be recorded together with the reasons to share or not share information.

Multi-Agency Working

Safeguarding adults' legislation gives the lead role for adult safeguarding to the Local Authority. However, it is recognised that safeguarding can involve a wide range of organisations.

Park Community School, sports bodies and community clubs may need to cooperate with the Local Authority and the Police including to:

- Provide more information about the concern you have raised.

- Provide a safe venue for the adult to meet with other professionals e.g. Police/Social Workers/Advocates.
- Attend safeguarding meetings.
- Coordinate internal investigations (e.g. complaints, disciplinary) with investigations by the police or other agencies.
- Share information about the outcomes of internal investigations.
- Provide a safe environment for the adult to continue their activity/ their role in the organisation.

Section 3: Appendices

Appendix 1 - Role of the Designated Safeguarding Lead and Key Personnel

The Designated Safeguarding Lead, school Senior Leadership Team and governors of Park Community School have primary responsibility for putting into place procedures to safeguard adults at risk, supporting clubs, community users and organisations to manage concerns about adults at risk.

Duties and responsibilities of the Designated Safeguarding Lead include:

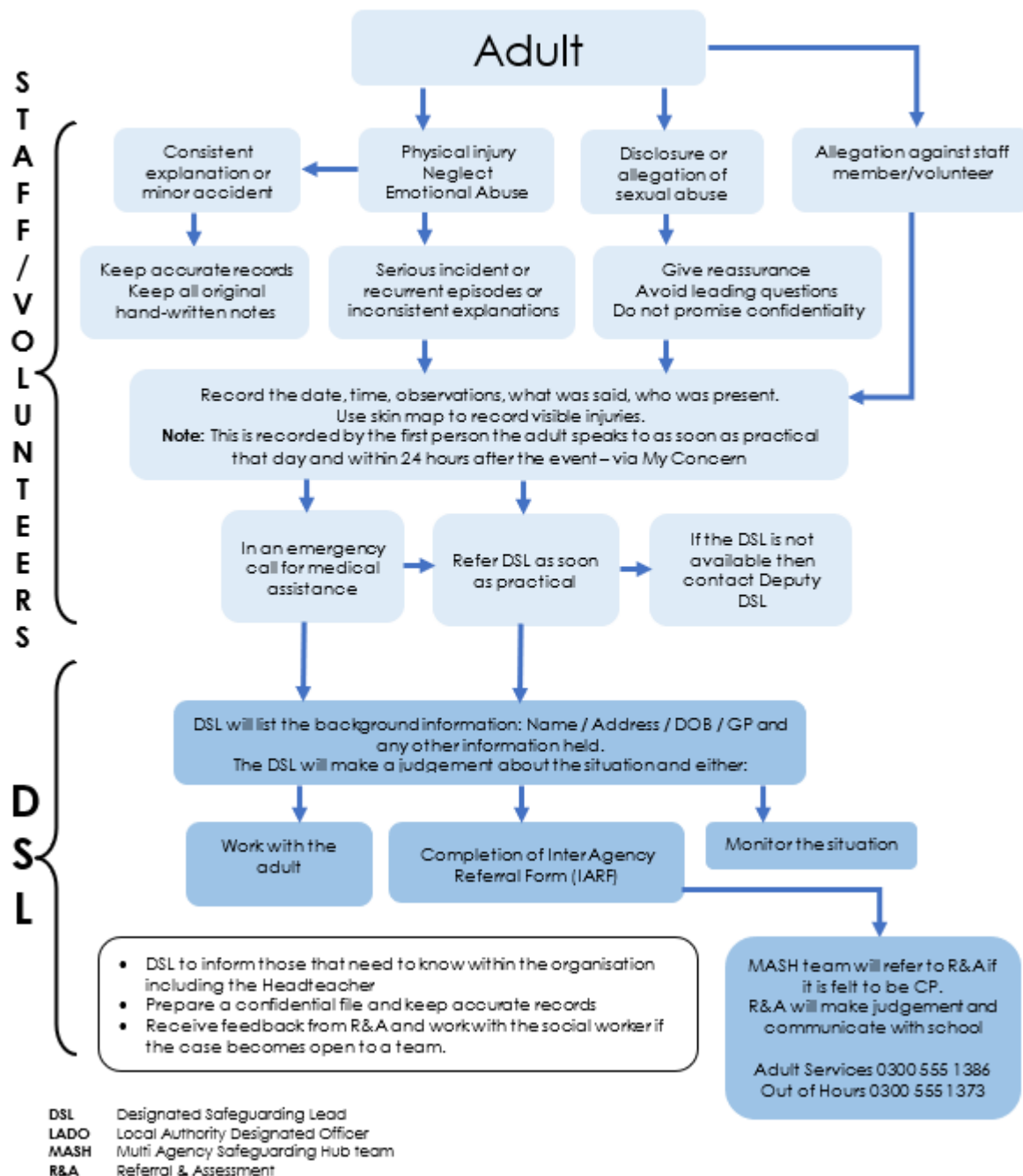
- Working with others within the organisation to create a positive inclusive environment within the sport and community usage.
- Play a lead role in developing and establishing the organisation's approach to safeguarding adults and in maintaining and reviewing the organisation's implementation plan for safeguarding adults in line with current legislation and best practice.
- Coordinate the dissemination of the safeguarding adult policy, procedures and resources throughout the organisation.
- Contribute to ensuring other policies and procedures are consistent with the organisation's commitment to safeguarding adults.
- Advise on the organisation's training needs and the development of its training strategy.
- Receive reports of and manage cases of poor practice and abuse reported to the organisation – including an appropriate recording system.
- Support the Community Manager to co-ordinate the case management process.
- Manage liaison with, and referrals to, external agencies for example adult social-care services and the police.
- Create a central point of contact for internal and external individuals and agencies concerned about the safety of adults within the organisation.
- Provide advice and support to other organisations including safeguarding officers and play a lead role in their recruitment, selection and training.
- Represent the organisation at external meetings related to safeguarding.

Key Personnel	Name (s)	Telephone No.
DSL	Susan (Soo) Bannard	07772 989963 023 92 489813 safeguarding@pcs.hants.sch.uk
Deputy DSL(s)	Jamie Bryce Erika Leach Susan Parish (DSL out of hours and community) Tammy Seaman	07725 483353 07756 772089 07590 807622 023 92 489800 x 1230 023 92 489800 x 1257 safeguarding@pcs.hants.sch.uk

Flowchart for Adult Protection Procedures

These procedures are intended to ensure that appropriate action is taken immediately where it is suspected or alleged that a adult is being abused.

In all situations do not promise confidentiality



Appendix 3 – Sources of Information and Support

Action on Elder Abuse

A national organisation based in London. It aims to prevent the abuse of older people by raising awareness, encouraging education, promoting research and collecting and disseminating information.

Tel: 020 8765 7000

Email: enquiries@elderabuse.org.uk

www.elderabuse.org.uk

Ann Craft Trust (ACT)

A national organisation providing information and advice about adult safeguarding. ACT have a specialist Safeguarding Adults in Sport and Activity team to support the sector

Tel: 0115 951 5400

Email: Ann-Craft-Trust@nottingham.ac.uk

www.anncrafttrust.org

Hampshire Adult Services

[Safeguarding adults | Health and social care | Hampshire County Council \(hants.gov.uk\)](#)

Tel: 0300 555 1386

Out of Hours: 0300 555 1373

Men's Advice Line

For male domestic abuse survivors

Tel: 0808 801 0327

National LGBT+ Domestic Abuse Helpline

Tel: 0800 999 5428

National 24Hour Freephone Domestic Abuse Helplines

Tel: 0808 2000 247

www.nationaldahelpline.org.uk/Contact-us

Rape Crisis Federation of England and Wales

Rape Crisis was launched in 1996 and exists to provide a range of facilities and resources to enable the continuance and development of Rape Crisis Groups throughout Wales and England.

Email: info@rapecrisis.co.uk

www.rapecrisis.co.uk

Respond

Respond provides a range of services to victims and perpetrators of sexual abuse who have learning disabilities, and training and support to those working with them.

Tel: 020 7383 0700 or

0808 808 0700 (Helpline)

Email: services@respond.org.uk

www.respond.org.uk

Stop Hate Crime

Works to challenge all forms of Hate Crime and discrimination, based on any aspect of an individual's identity. Stop Hate UK provides independent, confidential and accessible reporting and support for victims, witnesses and third parties.

24 hours service:

Telephone: 0800 138 1625
Web Chat: www.stophateuk.org/talk-to-us/
E mail: talk@stophateuk.org
Text: 07717 989 025
Text relay: 18001 0800 138 1625
By post: PO Box 851, Leeds LS1 9QS

Susy Lamplugh Trust

The Trust is a leading authority on personal safety. Its role is to minimise the damage caused to individuals and to society by aggression in all its forms – physical, verbal and psychological.

Tel: 020 83921839

Fax: 020 8392 1830

Email: info@suzylamplugh.org

www.suzylamplugh.org

Victim Support

Provides practical advice and help, emotional support and reassurance to those who have suffered the effects of a crime.

Tel: 0808 168 9111

www.victimsupport.com

Women's Aid Federation of England and Wales

Women's Aid is a national domestic violence charity. It also runs a domestic violence online help service.

www.womensaid.org.uk/information-support

Document Control Table	
Associated documents	<ul style="list-style-type: none">• Safeguarding Policy• Health & Safety Policy• Accessibility Plan• Equality & Diversity Policy
Date approved by governors	15/11/2023 Reviewed 20/11/2024
Date of Review	November 2026